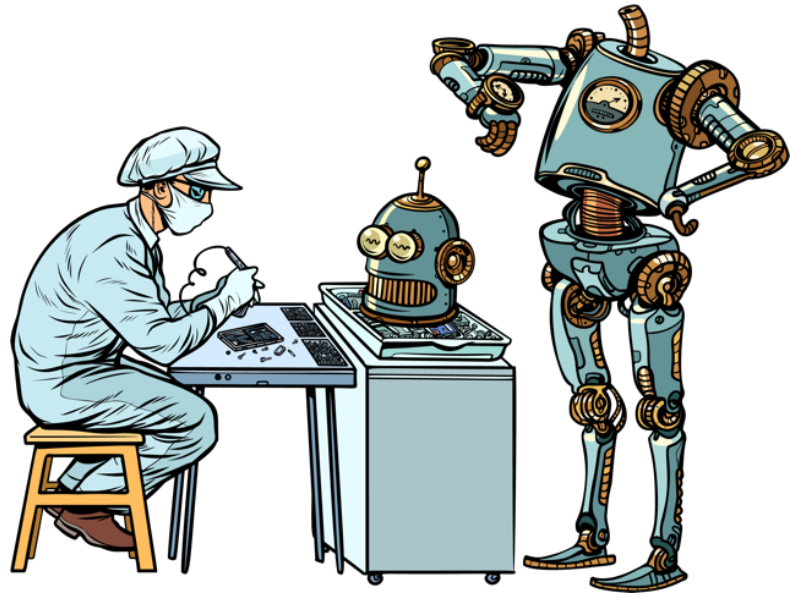




MICT Business: PAT testing



Businesses face a multitude of requirements, and at MICT, we strive to assist you wherever possible. In response to numerous client requests, we are proud to offer competitive PAT testing services for your company.

What is PAT testing?

PAT testing, short for "portable appliance testing," involves the examination of electrical appliances and equipment to ensure their ongoing safety. This process can be conducted through visual inspections or electrical testing, both of which require the expertise of a knowledgeable specialist. Our priority is always your safety, and we prioritize the highest standards in every testing procedure.

Do you need PAT testing?

Determining whether your appliances require PAT testing depends on various factors. If you have been using specific appliances for an extended period or are unsure of their current safety condition, arranging a test is recommended. Appliances that undergo frequent use may also benefit from PAT testing. If you have any doubts or questions about the need for PAT testing, our team is here to provide professional advice and guidance free of charge.

How frequently should electrical appliances be tested?

The frequency of testing your electrical appliances depends on individual circumstances. Appliances that are heavily utilized, such as daily-use microwaves or power tools at busy job sites, may require more frequent testing compared to appliances that are rarely used and spend most of their time in storage.

Is PAT testing legally required?

While PAT testing is not explicitly mandated by law, ensuring the safety of electrical appliances is a legal obligation. The law does not specify specific testing intervals or who should perform the tests, but engaging an industry professional is the safest and most reliable approach.

Get in touch!



T: 0151 708 0702

E: info@mictgold.com

W: www.mictgold.com